

Shooter Classification

Larry Zerngast, ATA Delegate

Any shooter with no average card will be classified as follows:

- >Adult male, not less than class B and not less than 20 yards.
- >Adult female, not less than class C and not less than 19 yards.
- >Male junior, not less than class C and not less than 20 yards.
- >Sub junior, not less than class C and not less than 19 yards.
- >KTA management reserves the right to add penalty yardage to shooters with less than 1500 handicap targets combined in the current and previous 2 years.
- >Shooters with less than 500 targets on current year's score card will be classified on the previous year's average if more targets were shot the previous year. If the total of the two years is less than 500 targets, the rule for shooters with no score card will apply unless the scores indicate that a higher class should be used.
- >Shooters with 500 to 1000 targets on the current year's card will be classified by the last 1000 targets if they show a definite trend either up or down from the total for the year. Any unusually low scores will be disregarded in computing averages.
- >In all cases not covered by the above rules, ATA rules regarding handicapping and other regulations will be strictly enforced. Any shooter will be disqualified if scores on their cards are found to be incorrect.

Shooters will be classified on average and known ability as follows:

Singles

97% and over	AA
94% and under 97%	A
91% and under 94%	B
88% and under 91%	C
Under 88%	D

Doubles

93% and over	AA
89% and under 93%	A
85% and under 89%	B
78% and under 85%	C
Under 78%	D

Juniors and Sub-Juniors may shoot "targets only" for \$16.00 per hundred and be eligible for trophies, but will be charged full price if they play any options.

GENERAL INFORMATION AND RULES

>ATA rules will govern all points not otherwise provided for herein. Interpretation of this program will be made by the board of directors and their decision will be final.

>This is an invitational tournament and we reserve the right to reject or refund any entry which in our judgement would be detrimental to this shoot. The Management reserves the right and authority to disqualify any contestant who handles his gun dangerously, and to remove contestant from further participation in any competition in which he may have entered.

>The Kansas Trapshooters Assn., Inc. or its staff will not be responsible for any accident or for any loss or property.

>No one, with exception of a referee, who is not an authorized puller or scorer, will be permitted to pull or score for anyone.

SAFETY (ATA Rule Sec. 4, I10): All guns must have the action opened and contain no live or empty shells at any time, except while the shooter is on the firing line. A break open gun's action may be closed when it is in a gun rack but it shall not contain a live or empty shell. Repeat offender(s) of these Rules will be

given a 30 day suspension upon a second violation of these Rules; a third violation of these Rules will result in a 90 day suspension; and further violations will be reviewed by the Executive Committee for further disciplinary action.

WITHDRAWALS & RE-SQUADDING

No refunds will be made to a shooter for withdrawal or scratching from an event unless the event is cancelled. **If a shooter misses their squad, there will be a \$20.00 re-squadding fee. NO EXCEPTIONS.**

WATCH FOR YOUR SQUAD

The first event of the day will start at the time listed. Be on the grounds ahead of the time and watch for your squad. Your squad cannot wait more than three minutes for you to take your place. If you are not there within the allotted time, your name will be scratched and your squad will proceed without you. You will not be paged.

CHECK YOUR SCORE

Watch your score—it cannot be changed after leaving shooting post. The official referee assigned to each trap is there to see that your proper score is recorded. In the absence of a separate referee the official scorer becomes both referee and scorer. Call any discrepancy to their attention immediately. Refer to ATA Official Trapshooting Rules Book. The referee's decision is final.

TIES AND SHOOT-OFFS

All ties will be carried over by sub-event to next like event of the shoot except for handicap events. All shootoffs will be conducted by any available directors.

AMMUNITION

A Contestant cannot use:

Any load with a velocity greater than 1290 fps with maximum shot charge of 1 1/8 ounces (31.89 grams), or 1325 fps with a maximum shot charge of 1 ounce (28.30 grams), or 1350 fps with a maximum shot charge of 7/8 ounce (24.80 grams), as measured in any individual shotshell. These velocities are maximum and no individual shotshell shall exceed these limits for the designated shot charge. In addition, no load containing more than 1 1/8 ounces (31.89 grams) or any shot larger than Number 7-1/2 can be used. Shot charges are maximum and no charge may exceed the charge amount more than 3%.
Any shell loaded with black powder.

Empties on the ground are the property of the KTA.

CHALLENGE AND PROTEST

A contestant may challenge the load of any other contestant. On receipt of a challenge the Management shall obtain a cartridge from the challenged, and if after examination, the Management finds the contestant violated the rule, he or she may be disqualified, accordingly, if the offense was willfully committed or otherwise.

CAMPERS AND EXHIBITORS

Electrical hookups in the lot east of the clubhouse are available for campers and vendors. A \$20.00 camping fee per day will be required payable at the cashier's window. Please be sure your electrical cords are heavy enough to carry sufficient current. Please do not sell from vehicles in the driveways.
Call Sandra McAllister for vendor reservations: Res.: 620-348-5325 or Cell: 620-546-3519.
Shower house will be open during all shoots.
The management MUST disqualify any shooter with alcoholic beverages on the firing line.
Food will be served at the Club House.
The KTA will give a pin to any shooter breaking 100 straight in a 100 target event (no carry overs) for the first time on these grounds.

Camper & Vendor Accommodations, contact:

Sandra McAllister – Res: 620-348-5325 • Cell: 620-546-3519

KTA Directors

Central Zone: Mark Crist, Charlie Spidell, Mike Jury, Kenny Bock

Eastern Zone: Rich Courtney, Dale Davis, Bruce Davis, Glen LaRue

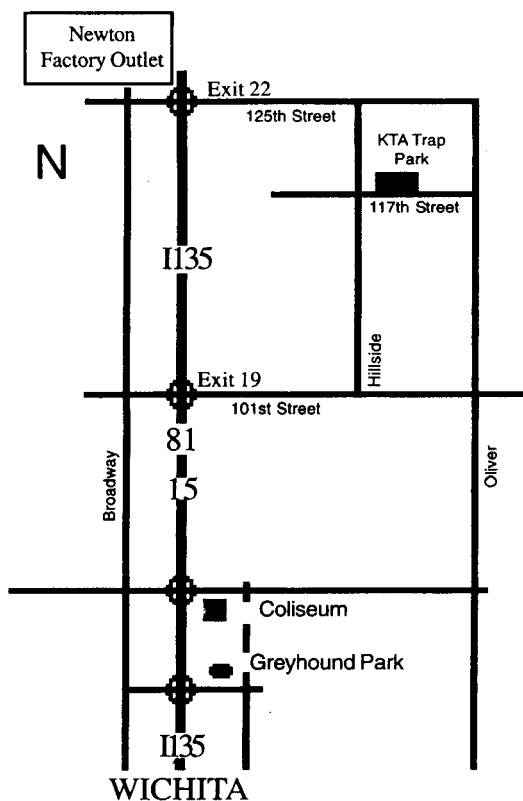
Western Zone: Gary Brehm, Artie Meier, Roy Rathbun, Carey McAllister

Youth Director: Becky Landgraf

Gun Club Directory - 2008

Anthony Gun Club	Phil Arnett – (620) 842-5559 P.O. Box 331, Anthony, KS 67003
*Capital City Gun Club	Bob Saathoff – (785) 272-7125 5831 SW Tumberry Ct. Topeka, KS 66614
Cedar Hill Gun Club	Mary Watson – (785) 843-8213 918 E. 1650 Rd., Baldwin, KS 66006
Dodge City Gun Club	Jim Byrum – (620) 225-6600 2705 Westview Dodge City, KS 67801
*Drywood Flyers	Joe Pucci – (620) 232-3799 603 N. Cayuga, Frontenac, KS 66763
*Elkhart Trap Range	Dennis McCarrell – (620) 697-2572 P.O. Box 165, Elkhart, KS 67950
*Garden City Trap Club	Becky Landgraf – (620) 275-6447 1609 A St, Garden City, KS 67846
Geary Co. Fish & Game Club	Scott Arcuri – (785) 238-8727 K244 Spur, Junction City, KS 66441
Hays City Sportsman's Club	Randy Davis – (785) 625-2085 5780 230th Ave., Hays, KS 67601
Hill Top Trap Park, Inc.	George Dresie – (785) 825-4341 725 E. Frisbie Way, Salina, KS 67401
Kansas Trapshooters Association	(316) 755-2933 3432 E. 117th, Sedgwick, KS 67135 Macksville, KS 67557
Kinsley Gun Club	Frank O'Brien – (620) 324-5693 115 Sunnyside, Lewis, KS 67552
*Lakin Gun Club	Corky Bless – (620) 355-7490 P.O. Box 1086, Lakin, KS 67860
Liberal Gun Club	Bud Peery – (620) 624-5810 1210 N. Cain, Liberal, KS 67901
Lone Tree Gun Club	Betty Wrestler – (620) 754-3548 2961 Florida Rd., Elsmore, KS 66732
Powder Creek Shooting Park	Kevin MaLoan – (913) 422-5063 8601 Monticello Rd - Lenexa, KS 66227
*Pratt Gun Club	Gary Brehm – (620) 672-3954 or Gary Westhoff – (620) 672-2005 110 N.E. 10th St., Pratt, KS 67124
*Red Rock Gun Club	Rich L. McAllister – (620) 886-5018 922 Goodview St. Medicine Lodge, KS 67104
*Santa Fe Trap Club	Guy Ernsing – (620) 564-2793 180 S.E. 100th Ave. Ellinwood, KS 67256
*Stafford Gun Club	Dale Richardson – (620) 234-5488 215 W. Broadway, Stafford, KS 67878
Tribune Gun Club	Harlan Campbell, Sr. P.O. Box 193, Tribune, KS 67879
Tuttle Creek Shooting Park	Rob Taylor – (785) 539-4392 6364 Tuttle Creek Blvd. Manhattan, KS 66503
*Ulysses Gun Club	Bill Rogers – (620) 356-2140 P.O. Box 233, Ulysses, KS 67880

*No Registered Shoots



For Information Contact

Rob Taylor, KTA President
785-539-4392

Don Budd, KTA Vice President
816-830-5277

Larry Zerngast, ATA Delegate
417-529-9590

Sandra McAllister, Secretary
959 S.W. 10th Street
Macksville, KS 67557
620-348-5325 - Res.
620-546-3519 - Cell

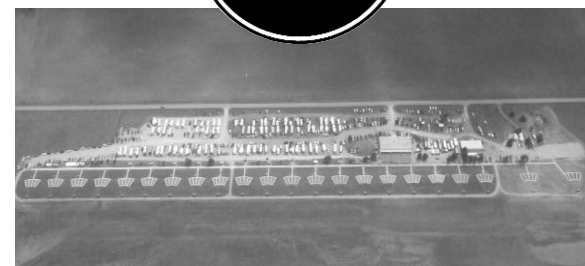
PRSRT STD
US Postage
Paid
Clay Center KS
Permit #110

KANSAS TRAPSHOOTERS ASSOCIATION

SANDRA McALLISTER
959 S.W. 10TH STREET
MACKSVILLE, KS 67557
Gun Club Phone
316-755-2933

For KTA Trapshooting News,
Shoot Dates, etc.
www.shootkta.com

Welcome To . . .



~ The Premiere
Shooting Facility
in the Midwest ~

KANSAS
TRAPSHOOTERS
ASSOCIATION

**5th Annual
HALL OF FAME
HONOR SHOOT**

August 22, 23, 24, 2008

Guaranteed Prizes & Trophies
Guns — Shells

KTA Website
www.shootkta.com

The 5th Annual KTA Hall of Fame Honor Shoot

AUGUST 22, 23, 24, 2008

ATA Daily Fee of \$2.00 • KTA Fees of \$2.00 per 100 • Kansas Sales Tax of \$1.90 per 100

Welcome Shooters!

We welcome you to the 2008 Hall of Fame Shoot. For those of you who haven't visited us for a while, welcome back. For those of you who have never been to the Premiere Shooting Facility in the Midwest, you'll like what you see: White flyer targets, Clear unobstructed background, Pat Traps, and Friendly Folks willing to do what it takes. We're looking forward to seeing you!

Good Shooting, The KTA Officers & Directors

FRIDAY - AUGUST 22, 2008

Practice 11:00 am

Program 12:00 pm

Event #1 - 200 Singles

- Honoring JoAnn Yowell -

Entry Fee (Targets & Shooter Service)\$56.20

- Options -

Lewis (3 Classes 60/40)\$20.00

* Cash Paybacks

(AA, A, B, C, D)

(Jr., Sub Jr., Vet, Sr. Vet, Lady)

Event #2 - 200 Doubles

- Honoring A.R. "Frenchy" Frigon -

Entry Fee (Targets & Shooter Service)\$56.20

- Options -

Lewis (3 Classes 60/40)\$20.00

* Cash Paybacks

(AA, A, B, C, D)

(Jr., Sub Jr., Vet, Sr. Vet, Lady)

SATURDAY - AUGUST 23, 2008

Practice 9:00 am

Program 10:00 am

Event #3 - 200 Singles

- Honoring Betty Wrestler -

Entry Fee (Targets & Shooter Service)\$56.20

- Options -

Lewis (3 Classes 60/40)\$20.00

* Cash Paybacks

(AA, A, B, C, D)

(Jr., Sub Jr., Vet, Sr. Vet, Lady)

Event #4 - 100 Handicap

- Honoring Cliff Sexton -

Entry Fee (Targets & Shooter Service)\$28.10

- Options -

\$5.00 each 25 (100%)\$20.00

\$10.00 each 50 (50-30-20%)\$20.00

Yardage Purse (50-30-20%)\$20.00

Lewis (3 Classes 60/40)\$20.00

* Cash Paybacks

(19-21, 22-24, 25-27)

(Jr., Sub Jr., Vet, Sr. Vet, Lady)

Event #5 - 100 Doubles

- Honoring Bob Ballard -

Entry Fee (Targets & Shooter Service)\$28.10

- Options -

Lewis (3 Classes 60/40)\$20.00

* Cash Paybacks

(AA, A, B, C, D)

(Jr., Sub Jr., Vet, Sr. Vet, Lady)

SUNDAY - AUGUST 24, 2008

Practice 8:00 am

Program 9:00 am

Event #6 - 100 Doubles

- Honoring Jack Solomon -

Entry Fee (Targets & Shooter Service)\$28.10

- Options -

Lewis (3 Classes 60/40)\$20.00

* Cash Paybacks

(AA, A, B, C, D)

(Jr., Sub Jr., Vet, Sr. Vet, Lady)

Event #7 - 100 Singles

- Honoring Robert Baker -

Entry Fee (Targets & Shooter Service)\$28.10

- Options -

Lewis (3 Classes 60/40)\$20.00

* Cash Paybacks

(AA, A, B, C, D)

(Jr., Sub Jr., Vet, Sr. Vet, Lady)

Event #8 - 100 Handicap

- Honoring Roy Weaver -

Entry Fee (Targets & Shooter Service)\$28.10

- Options -

\$5.00 each 25 (100%)\$20.00

\$10.00 each 50 (50-30-20%)\$20.00

Yardage Purse (50-30-20%)\$20.00

Lewis (3 Classes 60/40)\$20.00

* Cash Paybacks

(19-21, 22-24, 25-27)

(Jr., Sub Jr., Vet, Sr. Vet, Lady)

* CASH PAYBACKS

\$4.00 of each entry by Class or Category will be paid back to shooters in lieu of Trophies, Prizes, etc., all Ties Divide.

Example:

Champ - \$1.25 x shooters in event

Class & Category winner - \$2.50 x shooters in
Class or Category

HOA Champion - \$.25 x All Entries, Events 3-8

You must declare if you are shooting for Class or Category when you enter. There will be no changes made after entry.